

# **Ready Mixer**

# **OWNERS MANUAL**

**Safety, Operating  
Procedures, and  
Specifications**

**QUESTIONS?  
CONTACT US.**

Daniel Brandon  
Sales Representative

800-770-3956  
sales@readymixer.com  
www.readymixer.com



**Ready  
Mixer**

# TABLE OF CONTENTS

**Ready  
Mixer**

**Mixers on Trailers**

---

**Skid Rail Mixers**

---

**Hopper**

---

**Wheel Loader**

---

**Skid Steer**

---

# MIXERS ON TRAILERS

**Ready Mixer**

## Safety Precautions

Please be aware of your surroundings when operating this heavy machinery and make sure no hands go near the spinning shaft when in operation.

Never unhook a loaded trailer from a towable vehicle

Never allow children to operate the equipment  
Never operate the equipment while under the influence

The Battery Power Switch can immediately kill the power of the machinery in case of an accident or to prevent an accident

## Machine Operating Instructions

1. Check Gas Tank
2. Check Hydraulic Oil
3. Check Brake Fluid Oil
4. Check Engine Oil
5. Turnover the Battery Power Switch
6. Start the Honda GX690 Engine
  - a. Pull Choke Out on Cold Start to Turnover the Engine
  - b. Push Choke Back in once the engine is started
  - c. Push the Throttle to Full
7. Use Rotation Lever for Mixing and Tilt Lever for pouring

- 1 - Trailer Hitch
- 2 - Hydraulic Oil Circuit Radiator
- 3 - Honda GX690 Engine
- 4 - 12 Volt 450A 60 Ah Battery
- 5 - BMS 30 - 125 Hydraulic Motor
- 6 - Gear Box
- 7 - Mixing Drum
- 8 - 8 \* 6.5 - 16 LT Tires
- 9 - Rotation Control Lever
- 10 - Tilt Control Lever
- 11 - Battery Power Switch
- 12 - Brake Fluid Cap



# MIXERS ON TRAILERS

**Ready Mixer**



## Specifications

Model	1 Yard	1.75 Yard	3 Yard
Gear Reducer	Zhier	Zhier	Zhier
Motor	Honda GX690	Honda GX690	Honda GX690
Tire Size	8 * 6.5 - 16 LT	8 * 6.5 - 16 LT	8 * 6.5 - 16 LT
Hitch Type	2 inch	2 inch	2 inch
Length	16 ft	16 ft	16 ft
Width	5 ft	5 ft 7 in	6 ft 2 in
Height	6 ft 11 in	7 ft 3 in	7 ft 7 in
Pour Opening	3 ft	3 ft	3 ft
Battery Size	12 volt 60 Ah	12 volt 60 Ah	12 volt 60 Ah
Gas Tank Size	2.6 Gallon	2.6 Gallon	2.6 Gallon
Cooling Fan Type	Electric	Electric	Electric
Dry Weight	2,800 lbs	3,300 lbs	3,800 lbs
GVW Weight	6,800 lbs	10,000 lbs	15,800 lbs
Water Tank Size	50 Gallons	50 Gallons	50 Gallons
Axle Type	Dual	Dual	Dual

# SKID RAIL MIXERS

**Ready  
Mixer**

## Safety Precautions

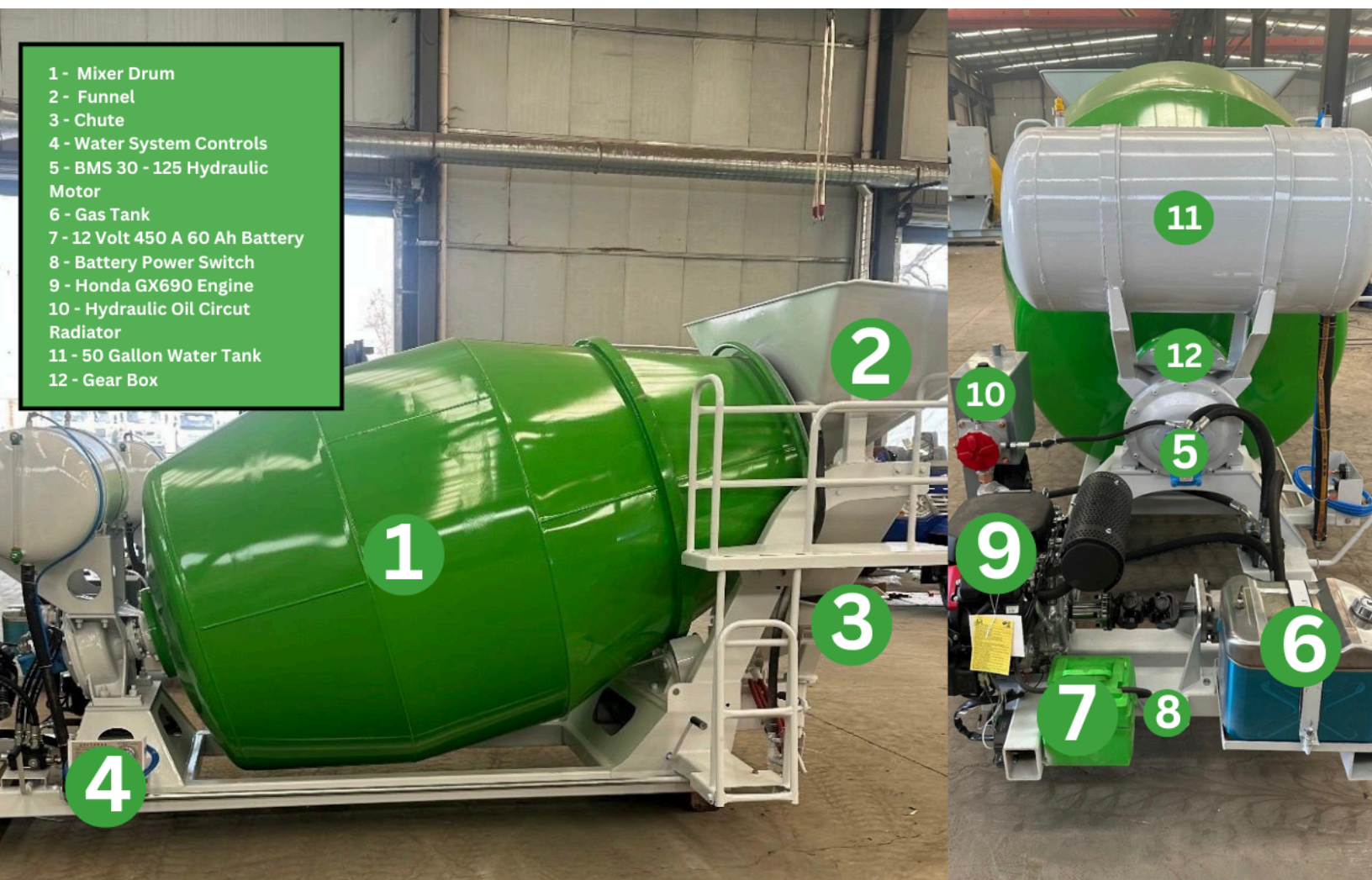
Please be aware of your surroundings when operating this heavy machinery and make sure no hands go near the spinning shaft when in operation.

Never allow children to operate the equipment  
Never operate the equipment while under the influence

The Battery Power Switch can immediately kill the power of the machinery in case of an accident or to prevent an accident

## Machine Operating Instructions

1. Check Gas Tank
2. Check Hydraulic Oil
3. Check Water Tank
4. Check Engine Oil
5. Turnover the Battery Power Switch
6. Start the Honda GX690 Engine
  - a. Pull Choke Out on Cold Start to Turnover the Engine
  - b. Push Choke Back in once the engine is started
  - c. Push the Throttle to Full
- 7.



# SKID RAIL MIXERS

**Ready Mixer**



## Specifications

Model	3 Yard	4 Yard	5.5 Yard	6.5 Yard	9 Yard
Gear Reducer	Zhier	Zhier	Zhier	Zhier	Zhier
Motor	Honda GX690	Honda GX690	Honda GX690	Honda GX690	Honda GX690
Drum Diameter	1.47 Yards	1.69 Yards	1.69 Yards	1.91 Yards	2.24 Yards
Dry Weight	2,458 lbs	2,678 lbs	3,031 lbs	3,185 lbs	4,541 lbs
Drum Thickness	4 mm	4 mm	4 mm	4 mm	5 mm
Length	116 inches	138 inches	159 inches	171 inches	182 inches
Width	53 inches	61 inches	68 inches	68 inches	80 inches
Height	64 inches	70 inches	85 inches	87 inches	88 inches
Water Tank Size	50 Gallons	50 Gallons	50 Gallons	50 Gallons	50 Gallons
Gas Tank Size	2.6 Gallons	2.6 Gallons	2.6 Gallons	2.6 Gallons	2.6 Gallons
Power Type	Gasoline	Gasoline	Gasoline	Gasoline	Gasoline
Discharge Speed	≥ 2.2 yards per minute	≥ 2.2 yards per minute	≥ 2.2 yards per minute	≥ 2.2 yards per minute	≥ 2.2 yards per minute

# HOPPER

**Ready  
Mixer**

## Safety Precautions

Please be aware of your surroundings when operating this heavy machinery and make sure no hands go near the belt or conveyor belt when running

Never allow children to operate the equipment  
Never operate the equipment while under the influence

## Machine Operating Instructions

1. Check Gas Tank
2. Check Engine Oil
3. Start the Honda 270 Engine
  - a. Pull Choke Out on Cold Start to Turnover the Engine
  - b. Pull the Cord like you would start a lawnmower
  - c. Push Choke Back in once the engine is started
  - d. Push the Throttle to Full
4. Proceed to dump aggregates into the hopper





# HOPPER

**Ready  
Mixer**



## Specifications

Model	Hopper	Hopper with Extended Legs
Motor	Honda GX270	Honda GX270
Motor HP	8.5 HP	8.5 HP
Fuel Type	Gasoline	Gasoline
Length	16 ft	16 ft
Width	5 ft	5 ft
Height	6 ft 11 in	8 ft 11 in
Dry Weight	1,500 lbs	1,627 lbs
Belt Width	16 in	16 in
Hopper Style	Dry	Dry
Conveyor Belt Drop Height	63 in	87 in

# WHEEL LOADER

# Ready Mixer

## Safety Precautions

Please be aware of your surroundings when operating this heavy machinery and make sure no one is near the equipment when moving. Make sure to be careful when switching attachments on the equipment. Never allow children to operate the equipment. Never operate the equipment while under the influence. Ensure there are no power lines or gas lines near while operating equipment.

## Machine Operating Instructions

1. Grease your Fittings
2. Check Diesel Tank (on the right side of the equipment)
3. Check Engine Oil (Located on the backside under engine access panel)
4. Check Hydraulic Fluid Levels ( Left side of the equipment)
5. Check Hydraulic Hose Connections
6. Put the keys in and start the machine
  - a. Make sure that your gear shift is in neutral
  - b. Put the correct attachment onto the wheel loader
  - c. Use the hooks to secure the attachment in and the quick hitch handle to lock the attachment.
7. Put the machine in forward
8. Use Hydraulic Lift Handle to pickup raw aggregate.
9. Proceed to dump aggregates into the hopper

- 1 - Standard Bucket Attachment
- 2 - 4 in 1 Bucket Attachment
- 3 - Forklift Attachment
- 4 - Quick Hitch Handle
- 5 - Hydraulic Lift Handle
- 6 - Hydraulic Quick Connect
- 7 - Heat AC Unit
- 8 - Fan
- 9 - Radio
- 10 - Weight Scales
- 11 - Backup Camera
- 12 - Horn
- 13 - Volt Meter
- 14 - Total Operating Hours
- 15 - Pressure Gauge
- 16 - Turn Signal/ Headlights
- 17 - Low/ High Speed
- 18 - Gear Shift



# WHEEL LOADER

**Ready  
Mixer**



## Specifications

Model	Wheel Loader
Rated Bucket Capacity	14.13 ft
Hopper Width	53.15 ft
Rated Load	1764 lbs
Total Weight	5584 lbs
Engine Type	Kubota
Power of Engine	24.65 HP
Dumping Height	90.55 in
Dumping Reach	27.17 in
Minimum Ground Clearance	8.66 in
Minimum Turning	189 in
Unloading Angle	37 degrees
Tire	31 - 15.5 - 15
Distance Between Axles	75 in
Distance Between Wheels	45.28 in
Transmission Assembly	240

# SKID STEER

# Ready Mixer

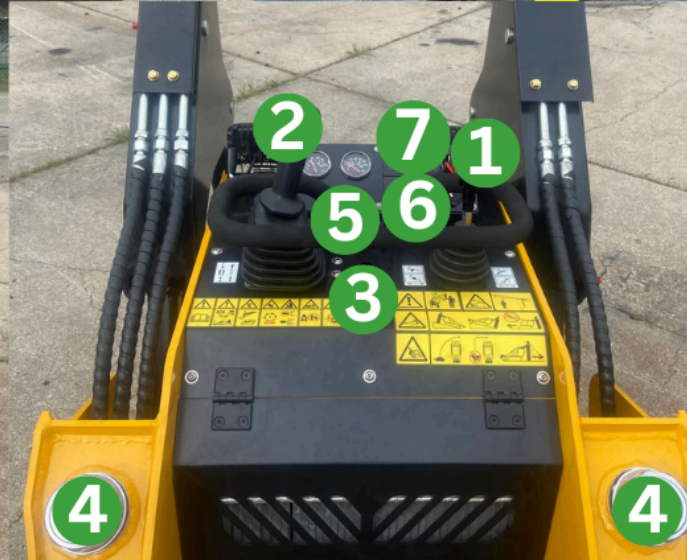
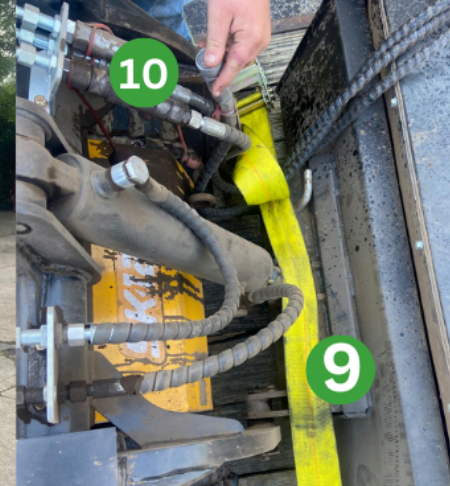
## Safety Precautions

Please be aware of your surroundings when operating this heavy machinery and make sure no one is near the equipment when moving. Make sure to be careful when switching attachments on the equipment. Never allow children to operate the equipment. Never operate the equipment while under the influence. Ensure there are no power lines or gas lines near while operating equipment.

## Machine Operating Instructions

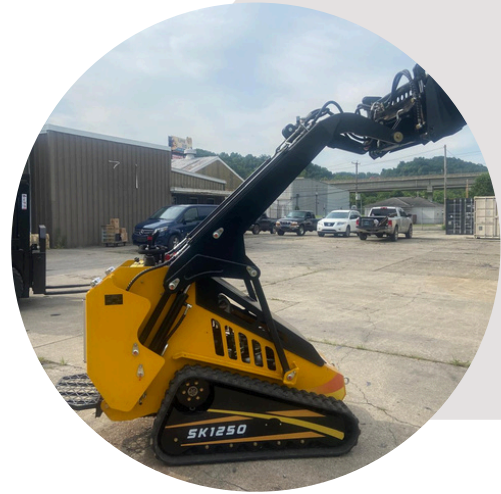
1. Grease your Fittings
2. Check Diesel Tank Gauge
3. Check Engine Oil
4. Check Hydraulic Fluid Levels
5. Put on desired attachment.
6. Check Hydraulic Hose Connections
7. Put both keys in and start the machine
  - a. Make sure that your gear shift is in neutral
8. Put the machine in forward
9. Use Hydraulic Lift Handle to pickup raw aggregate.
10. Proceed to dump aggregates into the hopper

- 1 - Hydraulic Lift and Tilt
- 2 - Movement Control Lever (Forward, Reverse, etc)
- 3 - Throttle
- 4 - Diesel Tanks
- 5 - Keyswitch 1
- 6 - Attachment Controls
- 7 - Lights
- 8 - Kubota Engine
- 9 - Pin Detachment
- 10 - Hydraulic Connection
- 11 - Diesel Gauge



# SKID STEER

**Ready  
Mixer**



## Specifications

Model	Skid Steer
Length	9.51 feet
Width	3.5 feet
Height	5 feet
Weight	3,417 lbs
Track Width	7 inches
Transmission Drive	-
Drive Speed Max	4.3 mph
Engine Make and Type	Kubota 1505
Engine Output	24 HP
Torque Max	1700 RPM
Bucket Capacity	7 cubic feet